

GISBURN AUCTION MARTS

Auction Mart Office 01200 445376 Fred 07713 075660
Ann 07710 709979 Rachel 07713 075659
E: gisburn@rtturner.co.uk www.gisburnauction.co.uk

Saturday 7 July *Fortnightly sales:*

10.30am **300 BREEDING, FEEDING &**

STORE CATTLE starting sale with
BREEDING BULLS Inc Angus, Lim & Char

9.30am **CULL EWES & PRIME LAMBS**

11.30am **STORES & BREEDING SHEEP**

10.30am **BREEDING & STORE PIGS**

Thursday 12 July *Weekly sales*

10.30am **100 PRIME CATTLE, 100 CULL**

10.30am **200 REARING CALVES**

11.30am **50 DAIRY** new calved, in-calf & disp

1.00pm **PRIME SHEEP & CULL EWES**

Saturday 14 July

9.30am **CULL EWES, PRIME LAMBS**

Followed by **BREEDING SHEEP**

Saturday 21 July

SUCKLER COW & CALF SHOW

1ST EARLY BREEDING EWE SALE

OPENING SHOW OF STORE LAMBS

Entries for catalogue by Tuesday 17 July

Thursday 26 July

FORTHCOMING DAIRY SALE

40-50 recently calved hfrs & young cows for A & C Parkinson, Chipping following the weekly sale

Tuesday 31 July at 5.30pm

SUMMER MACHINERY SALE



Entries for advertising 01200 441351

Saturday 11 August

NORTHERN DORSET BREEDERS SALE

ESTATE & LAND AGENCY OFFICES

Auctioneers & Valuers throughout the Northwest :

info@rtturner.co.uk Web: www.rtturner.co.uk

SAWLEY, Nr Clitheroe BB7 4LH (01200) 441351

BENTHAM, Nr Lancaster LA2 7HF (015242) 61444

CROOKLANDS, Nr Kendal LA7 7NU (015395) 66800

FOR THE LATEST GISBURN AUCTION MARKET

REPORTS & PRICES

CLICK THIS LINK TO OUR WEBSITE MARKET REPORTING PAGES

<http://www.gisburnauction.co.uk/gam-reports.html>

If you have any interesting news, products or adverts you would like us to feature then give

Ann a call on

01200 441351 or email

afaraday@rtturner.co.uk

Find us on Facebook



Click the link below to go there!

<https://www.facebook.com/gisburnauction>



**FARM ASSURANCE FABBL
IMPORTANT - ALL ENTRY
FORMS MUST BE COMPLETED
BY THE VENDOR**

Including the Farm Assured status of *each individual animal*
(90 day rule for cattle, 60 days for sheep)

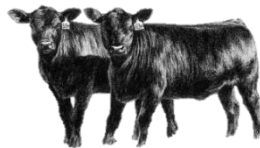
***INCOMPLETE FARM ASSURED DETAILS WILL RESULT IN THE ANIMAL
BEING SOLD AS NON FARM ASSURED***

ARE YOU FARM ASSURED?

- If so, tell us on the entry forms but please ensure:
- Are you up to date?
- For the right animal category?
- Have you checked they hold the correct details & CPH No?
- **Please use the stickers provided on entry forms**
- Stickers can be requested on line.



**ALL PAPERWORK MUST BE READY
TO HAND IN AT THE DOCKS ON ARRIVAL**



STOCK SHOWING SIGNS OF DISEASE OR INJURY OR IN AN UNFIT OR INFIRM CONDITION WILL NOT BE ACCEPTED INTO GISBURN AUCTION.

The Welfare of Animals (Transport) (England) Order 2006

<http://www.legislation.gov.uk/ukxi/2006/3260/contents/made>

The Welfare of Animals at Markets Order 1990

<http://www.legislation.gov.uk/ukxi/1990/2628/contents/made>

For further help please visit the above web pages or for information please call

The auction office on 01200 445376

Gisburn

Auction Marts

Lancashire's Leading Livestock Centre



CONTACT:

Sale days: 01200 445376

Non sale days: 01200 441351

www.gisburnauction.co.uk

gisburn@rtturner.co.uk