

# **MARKET REPORTS FOR JANUARY 2016**

Including to date:

Monday 4<sup>th</sup> January

Thursday 7<sup>th</sup> January

Saturday 9<sup>th</sup> January

Monday 11<sup>th</sup> January

Thursday 14<sup>th</sup> January

Saturday 16<sup>th</sup> January (machinery)

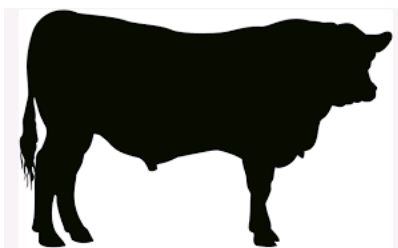
Monday 18<sup>th</sup> January

Thursday 21<sup>st</sup> January

Saturday 23<sup>rd</sup> January

Monday 25<sup>th</sup> January

Thursday 28<sup>th</sup> January



## GISBURN THURSDAY MARKET REPORT

### Thursday 28<sup>th</sup> January 2016

**Forward: 236 Total Prime Cattle 53 Young Bulls; 37 Heifers & Steers & 146 Cull Cows**  
**32 Total Dairy Cattle**  
**169 Rearing Calves**  
**10 Stirks**  
**489 Prime Sheep 399 Prime Hogs & 90 Cast Sheep**

PRIME CATTLE	No.	Top (p/kg)	Ave (p/kg)
--------------	-----	------------	------------

<b>HEIFERS</b>	Top sale price £1687.40 P Baines Overall average price 211.1 p/kg		
----------------	---	--	--

Premium	19	292ppk JM Townsend	248.6
Prime	2	204ppk A Rayton	198.7
Others	8	154ppk J V & S H Rowland & Sons	123.8

<b>STEERS</b>	Top sale price £1424.80 R W Longton Overall average 214.8 p/kg		
---------------	--	--	--

Premium	3	260ppk RW Longton	258.3
Prime	3	205ppk B Bentham	198.4
Other	2	179ppk John Neary	177.9

<b>BULLS</b>	Top Sale Price £1310.76 D Ellis Overall average 153.9 p/kg		
--------------	--	--	--

Premium	3	206ppk E Howard & Son	204
Prime	13	198ppk D Ellis/W&J Parkinson	189.5
Others	37	178ppk JW & LJ Mellin	137.1

<b>CULL COWS</b>	Top Cull Continental Cow sale price £952.50 JM Townsend		
	Top Cull Bull sale price £986 R & GM & M Falshaw		
	Top Cull Dairy Cow £974.16 WH & JW Hartley Overall average 93.2p/kg £621.54		

Premium	4	142ppk JA & JM Wade & son	134.1
Prime	50	125ppk JA & JM Wade & Son	108.9
Other	91	104ppk E & LM & SE Barnes	81.9
Males	1	116ppk R & GM Falshaw	116
Dairy	118	122ppk E Nowell & Son	89.4

*Auctioneer's comment:*

*Full attendance of buyers for steers and heifers with 22 premium grade to average over 250ppk. Young bulls lacking quality and finish procuring a very average trade. Cull cows similar trade to the last two weeks as predicted. February should see trade lifting.*

DAIRY CATTLE	Top price (£)	Average price (£)
Newly Calved Cows	£1040 AP Lumb	£930
Newly Calved Heifers	£1720 G&MA Smith	£1239
In-Calf Hfrs	£1010 P Robinson	£924

*Auctioneer's comments:*

*A very mixed show in the dairy ring and the doom and gloom of more price cuts made it more challenging than the previous two weeks. As usual the best on offer were well bid for with Rob Smith selling a top shot heifer at £1720 to David Coulthurst and Michael Fish selling a 33 litre heifer to Richard Critchley at £1600. The best of the rest were Ben Hardcastle's at £1400 and Brian Hall at £1510 and £1360. There were tidy heifers at either side of £1000 and some plainer sorts were unsold.*

*In-calf cattle sold well to £1010 and two longer dated heifers at £880 each.*

PRODUCE	Top price (£)	Average price (£)
Small bales of Hay	To £1.90 per bale	

<b>CALVES</b>	<b>Bulls Top price (£)</b>	<b>Ave (£)</b>	<b>Heifers Top price (£)</b>	<b>Ave (£)</b>
AAngus x	264 J Wellock	207	210 J Wellock	195
Black & White	150 R Collinge & Sons	61		
British Blue	410 P&J Cowgill	316	382 AJ & AJ Gibbons	252
Charolais x	335 G & M Dakin & Son s	333		
Hereford x	292 Boustagill Farms	280	300 Boustagill Farms	218
Limousin	392 P, RA & DC Holt	194	272 AC & N Starkie	184
Mont x	135 R Collinge & Sons	130		
Simmental x	368 ES & B Davies	258	255 ES & B Davies	216
Welsh x			75 PJ & H Hartley	75
Continental		285		235
Native		244		204
<b>STIRKS</b>	<b>Males Top price (£)</b>	<b>Ave (£)</b>	<b>Heifers Top price (£)</b>	<b>Ave (£)</b>
Black & White	378 C Stackhouse	339		

*Auctioneer's Comments:*

*A cold day round the calf ring as Gisburn Village suffered a powercut. The auction's generator couldn't supply enough electric to switch on any heaters!*

*Trade in the ring however was not as cold as some feared. Total clearance of 179 calves and stirks forward and still the best could clear the £400 barrier. £410 and £402 for blue bulls from P & J Cowgill ad £410 again for the last calf in the ring from Richard Briggs. Plenty of others £350 plus.*

*The best blue heifers are still very much sought after, £382 from A J Gibbons, £345 from the Hartley family and £342 from P & J Cowgill. Plenty £280 plus. Second quality continental calves were less money.*

*More Herefords about today, neither bulls nor heifer took any fault at all. Dairy bulls ranged widely between £5 and £150, better sorts £80 plus all day.*

*It wasn't stirk week today but 10 all dairy bred turned up anyway. A pen of blocky Friesian 7mo bull stirks were keenly bid to £378.*

*Next Thursday 4<sup>th</sup> February we expect approximately 50 stirks, continentals and dairy bred to follow the calves.*

*Would all vendors please ring the office on 01200 441351 by Tuesday lunch with entries.*

<b>PRIME HOGGS</b>	<b>Top Sale Price (£)</b>	<b>Top Kilo Price (p/kg)</b>	<b>Average (p/kg)</b>
-32kgs	£55 Bowland Bros	177.4 Bowland Bros	157.8
32-39kgs	£73.50 Rowntree Farms	189.5 A Heselton	171.9
40-45.5kgs	£83.50 E&J Haythornthwaite	192.9 J Gregson	164.5
46.5-52.kgs+	£93 J Bolton & Sons	189.8 J Bolton & Son	168
52kgs +	£109 A & T Smith	184.7 A&T Smith	142.7
<b>Overall SQQ Lamb Average 166.2 p/kg, Overall Lamb Price £70.63</b>			
Beltex	£109 A&T Smith	184.8 A&T Smith	184.8
Cheviots	£60 M Bowen	177.4 Bolland Bros	143.1
Charollais	£80 E&J Haythornthwaite	189.5 A Heselton	142
Gritstone	£67.50 A&T Smith	168.8 A&T Smith	164.7
Horned	£71 A&T Smith	152.6 T Robinson & Son	146.9
Mule	£70 R Jackson & Sons	150 T Robinson & Son	141.6
Texel	£93 J Bolton & Sons	192.9 J Gregson	170.5
<b>CAST SHEEP</b>	<b>Top Sale Price (£)</b>	<b>Average</b>	
Others	£75 S Greenwood	£61	
Horned	£60 J & W Bracewell	£26	
Tups	£40 T Robinson & Son	£35.50	

*Auctioneer's comments*

*Average trade typical of the level achieved throughout the week. Best butcher grades average 190ppk, export quality 170ppk. Mules, hill lambs and heavyweight 150ppk, cull ewes 90ppk, lean ewes 50ppk.*

# GISBURN MONDAY MARKET REPORT

Monday 25<sup>th</sup> January 2016

Forward: 210 TOTAL PRIME SHEEP  
 To incl 204 HOGGS  
 6 EWES

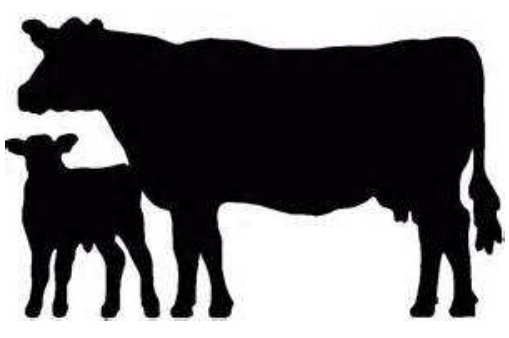
NEW SEASON LAMBS	Top Kilo Price (p/kg)	Top Sale Price (£)	Ave (p/kg)
Upto 32kgs	143.8 H Horsfield & Sons	£46 H Horsfield & Sons	143.2
33-39kgs	180.8 H Horsfield & Sons	£70.50 H Horsfield & Sons	165.9
40-45kgs	180.0 RR & M Walker	£81 H Carr & Son	166.7
46-52kgs	178.3 C H Hull	£87.50 C H Hull	169.1
53kgs +	166.7 C H Hull	£90 C H Hull	153.8
<b>Overall lamb average £67.77 or SQQ 166p</b>			
Breed	Top Kilo Price (p/kg)	Top Sale Price (£)	Ave (p/kg)
<b>Beltex</b>	178.3 C H Hull	£90 CH Hull	175.7
<b>Charollais</b>	171.1 AR & J Alsop & Sons	£75 P Coates (Farmers) Ltd	166.3
<b>Chevoits</b>	170.6 N Sunderland	£70 N Sunderland	166.3
<b>Continental</b>	167.1 J L Allison	£68.50 JL Allison	158.7
<b>Gritstone</b>	171.8 A&T Smith	£67 A&T Smith	171.8
<b>Mule</b>	157.9 H Horsfield & Sons	£63.50 R Mawson	154.6
<b>Suffolk</b>	162.8 RR & M Walker	£80 A & T Smith	158.0
<b>Texel</b>	180.8 H Horsfield & Sons	£90 A & T Smith	169.2
CAST SHEEP	Top Sale Price per head (£)	Ave Price per head (£)	
Mule	£45 FS & SM Dinsdale	£35	
Suffolk	£55 FS & SM Dinsdale	£55	
Texel	£48 FS & SM Dinsdale	£48	

# GISBURN SATURDAY MARKET REPORT

Saturday 23<sup>rd</sup> January 2016

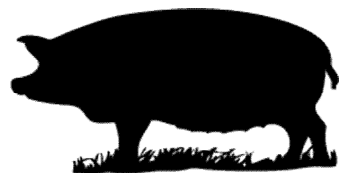
<b>Forward:</b>	<b>215</b>	<b>TOTAL BREEDING/STORE CATTLE</b>
		<b>1 Cows and Calves</b>
		<b>14 In Calf Cattle</b>
		<b>41 Bulls</b>
		<b>159 Steers/Heifers</b>
	<b>114</b>	<b>PIGS</b>
	<b>820</b>	<b>322 BREEDING AND STORE SHEEP and 498 STORE HOGGS</b>
	<b>1</b>	<b>PRODUCE, 42 bales barley straw</b>

## BREEDING /STORE CATTLE

COWS WITH BULL CALVES		£Avg	COWS WITH HEIFER CALVES		£Avg
Limousin			£1080 WA Towler		£1080
British Blue	£1210 Robert Capstick	£1210			
IN-CALF/FEEDING CATTLE					
AA	£720 AB & BH Proctor	£720			
BBlue x	£780 R Williams	£755			
Dexter	£200 John Lawn	£200			
Limousin	£740 R & C Greenwood	£640			
Simmental	£750 R Williams	£688			
STORES	Bulls Top price (£)	Ave (£)			
AA	£575 P Fletcher	£575			
Baz	£735 J Bosworth	£665			
B'Aqu x	£770 JP Stansfield Ltd	£770			
British Blue x	£825 Paul Taylor	£792			
Hereford x	£660 A & C Bennett	£660			
Lim	£1000 KD & W Midgley	£668			
Mol	£670 Paul Taylor	£595			
Simmental	£750 R & A J Haworth	£694			
Shorthorn	£500 R Williams	£500			
STORES	Steers Top price (£)	Ave (£)	Heifers Top price (£)	Ave (£)	
AAX	£980 W Maudsley	£960	£950 M Barnes	£757	
Black & White	£875 W & S Mason	£551			
British Blue x	£985 E & M A Burrow & Son	£985	£820 A J Marsden	£708	
Brown Swiss			£835 J Cowking	£835	
Charolais	£850 ER Hollingworth & Son	£647	£770 ER Hollingworth & Son	£705	
Hereford	£940 W Maudsley	£870	£560 ST & JE Foster	£560	
Lim	£1120 H Procter	£727	£1020 AJ Marsden	£679	
Longhorn	£975 R & M Rigby	£975			
Luing x			£825 R & G Ball	£825	
Mol	£485 A & A Bradley	£388			
Salers			£865 W Tomlinson	£855	
Simmental			£905 J & E Atkinson & Son	£804	
Swedish R&W	£490 P & S Ireland	£490			
White Galloway	£885 N Richardson	£838			

*Auctioneer's comment:*

*Breeding cows with calves and in-calf straight trade, geld cows for feeding were good trade. Store bulls met a strong trade taking account of their age. Steers and heifers were good to sell with a large audience. Yearling steers and heifers £750 to £850 with quality and size pushing £1000.*

PIGS		Avg	
Weaners	£21 J Critchley	£9.50	
Store	£42 S Whitehead	£23.10	
Prime	£58 E Bates	£42.40	
In-Pig Sow	£63 L Sutcliffe	£63	
Sows	£58 D M Cooper	£43.44	
Boars	£54 SB & AJ Wallbank	£23	

*Auctioneer's comment:*

*A modest entry of pigs today but still a variety to suit all. Please ensure you book your pigs in beforehand, at the latest Monday 1<sup>st</sup> February for Saturday 6<sup>th</sup> February sale for advertising. Thankyou.*

<b>PRODUCE</b>		
Barley Straw (small bales)	£2.20 per bale	
<b>SHEEPDOG PUPS</b>		Avg
Male sheepdog pups	£125	£92

<b>BREEDING &amp; STORE SHEEP</b>	<b>Top(£)</b>	<b>Av(£)</b>
<b>IN-LAMB EWES</b>		
Cheviot	£110 J Wood	£101
Mule	£103 R Ainsworth	£88
Suffolk	£125 J Wood	£89
Texel	£255 JW & LJ Mellin	£120
Zwarbtle	£80 SL & N Blockeel	£75
<b>IN-LAMB SHEARLINGS</b>		
Texel	£355 JW & LJ Mellin	£139
<b>IN-LAMB HOGGS</b>		
Texel	£140 JW & LJ Mellin	£96
Zwarbtle	£81 SL & N Blockeel	£81
<b>EMPTY BREEDING GIMMERS</b>		
Texel	£110 J Barton	£110
<b>BM IN-LAMB</b>		
Cheviot	£74 J Wood	£74
Mule	£86 M Bretton	£83
Texel	£90 M Bretton	£81
Zwarbtle	£70 SL & N Blockeel	£67
<b>STORE LAMBS</b>		
Beltex	£73 Ben Webber	£73
Charollais	£68.50 Westalls	£54.50
Cheviot	£65 W R Mason	£56
Dorset	£45 G Abbot	£45
Gritstone	£40 A Clay	£38
Horned	£58 M Bowen	£46
Jacob	£60 J H Walsh	£55.50
Lly	£46 R N & O J Eminson	£43
Lonk	£48 Westalls	£48
Mule	£70 Branden Atkinson	£42.50
Swaledale	£36 W R Mason	£28.50
Texel	£110 B & M Slater	£56.50
Overall Average		£49

*Auctioneer's comment:*

First into the ring today three sheepdog pups from Hawes sold to £125 (averaged £92).

Next MV Texels from John and Linda Mellin, Hull House. Ewes due 20<sup>th</sup> March onwards to the breed champion and reserve interbreed champion at the Great Yorkshire Show 2015, Langside Thunderbird all away to £255 (avg £225). Shearlings in lamb to the same ram to £355. Gimmer lambs to £140. Jill Mortimer Tarbatt, Darwen, topped the Texel section with a shearling due Valentines day carrying a single and in-lamb to Proctors Vodka at £370.

Plenty more interest in the commercial in-lamb department than the previous fortnight. Mules would be up £10-£15. Even this late in the season there is demand for store lambs. We had a wide range of goods forward today, topping at £73, plenty £60 plus and an overall average of £50 for all types.

Next sale in a fortnight on 6<sup>th</sup> February. We already have several batches of in-lamb sheep entered, we expect some sheep and lambs and would encourage vendors wherever possible to phone the office on 01200 441351 by Tuesday lunch time 2<sup>nd</sup> February with approximate entries.

## GISBURN THURSDAY MARKET REPORT

### Thursday 21<sup>st</sup> January 2016

**Forward: 237 Total Prime Cattle 42 Young Bulls; 62 Heifers & Steers & 133 Cull Cows**  
**47 Total Dairy Cattle**  
**138 Rearing Calves**  
**38 Stirks**  
**601 Prime Sheep 491 Prime Hogs & 110 Cast Sheep**

<b>PRIME CATTLE</b>		<b>No.</b>	<b>Top (p/kg)</b>	<b>Ave (p/kg)</b>
<b>HEIFERS</b>	Top sale price £1388.40 JM Townsend Overall average price 186.9 p/kg			
	Premium	13	275ppk JE & G Burrow	230.5
	Prime	18	208ppk A Rayton	186.7
	Others	9	176ppk GA & A Atkinson	130.5
<b>STEERS</b>	Top sale price £1467 JM Townsend Overall average 201.9 p/kg			
	Premium	6	248ppk J M Townsend	228.7
	Prime	6	209ppk B Bentham	194.9
	Other	2	170ppk ST Salthouse	153.8
<b>BULLS</b>	Top Sale Price £1776 RS Harker & Son Overall average 172.4 p/kg			
	Premium	2	224ppk G Whalley	213.1
	Prime	28	194ppk T & JH Wrennall	180.5
	Others	11	163ppk JS & KM Wilson & Son	141.1
<b>CULL COWS</b>	Top Cull Continental Cow sale price £1277.64 R Seed & Son Top Cull Bull sale price £1083.94 RS & BA Harker Top Cull Dairy Cow £ Overall average p/kg £			
	Premium	15	169ppk R Seed & Son	137.8
	Prime	43	1.19ppk WH & JW Hartley	111.1
	Other	74	105ppk J & CG Redmayne	84.6
	Males	1	143ppk RS & BA Harker	143.0
	Dairy	100	133ppk G & JN Booth	93.4
<i>Auctioneer's comment: To follow</i>				

<b>DAIRY CATTLE</b>	<b>Top price (£)</b>	<b>Average price (£)</b>
Pedigree Newly Calved Heifers	£1760 Frankland Farms, Rathmell	£1403
Pedigree Newly Calved Cows	£1340 W Rogerson & Son, Singleton	£1340
Newly Calved Heifers	£1560 JG Hall & Son, Gargrave	£1153
In-Calf Hfrs	£1010 A Walton, Chorley	£920
In-Calf Cows	£1010 C Drake, Thornton, Bradford	£1010
Dairy Calves	£210 DW & BL Mattinson, Bracewell	£170
Pedigree Hereford Breeding Bull	£1260 K Robinson	£1260

*Auctioneer's comments:*

*A Full shippin again for the Cogent sale and a solid trade for the majority on offer. Champion heifer came from Anthony Bretherton, she was by Sabbiona Goldfarm and out of a VG dam and sold for £1720 to JJ & JD Graves. Top price went to Frankland Farms for a Denmire sired heifer also going to Doug Graves at £1760. An entry from new vendors J Seed & Son were well received and sold up to £1600 to Richard Critchley and averaged £1450. In the commercial section JG Hall claimed top price at £1560 selling to M Kenyon. The bottom end of the market was much firmer and there was much more enthusiasm for the in-calf section. Heifers from Alan Walton in-calf to Fertility Plus sold to £1010 and an in-calf cow from Chris Drake also made £1010. January has proved to be a busy month and to date we have traded over 140 dairy cattle with another 30 expected next week. The sale concluded with a 4 year old Pedigree Hereford bull which sold to a ring full of 6 bidders at £1260.*

# COGENT PEDIGREE DAIRY CATTLE SHOW RESULTS

## 21.1.16



Judged by Aubrey Greenhalgh

	<u>Vendor</u>	£	<u>Purchaser</u>
<b>CHAMPION</b>	A Bretherton & Sons	£1720	D Graves
<b>RESERVE CHAMPION</b>	Frankland Farms	£1700	Hill & Davies
<b>Class1 Best Pedigree Newly Calved Heifer</b>			
1 <sup>st</sup>	A Bretherton & Sons	£1720	D Graves
2 <sup>nd</sup>	Frankland Farms	£1700	Hill & Davies
3 <sup>rd</sup>	RF & J Hildreth	£1680	Critchley
<b>Class2 Best Pedigree Newly Calved Cow</b>			
1 <sup>st</sup>	W Rogerson & Son	£1340	Hill & Davies
<b>Class 3 Best Non Registered Newly Calved Heifer</b>			
1 <sup>st</sup>	R H Close	£1020	Hill & Davies
2 <sup>nd</sup>	G & M Dakin & Sons	£1200	Hill & Davies
3 <sup>rd</sup>	L R Hamer & Son	£1500	M J Kenyon



Congratulations to Anthony and Suzanne Bretherton of Whitechapel on winning Overall Champion in today's Cogent Pedigree Show after winning 1<sup>st</sup> prize for best pedigree newly calved heifer. Winning lot 109 known as Beauteside Beautee comes from the Beauteside herd which started out about fifty years ago by Anthony's father, Tony and his uncle John Bretherton. Having 130 milkers the family have not bought another animal in for over thirty years and have been regular vendors at Gisburn for the last five years.

*Picture left: Anthony Bretherton with champion Beauteside Beautee*



<b>CALVES</b>	<b>Bulls Top price (£)</b>	<b>Ave (£)</b>	<b>Heifers Top price (£)</b>	<b>Ave (£)</b>
AAngus x	£300 FA & TCR Wrathall	£210	£255 J Pemberton	£173
Black & White	£242 K & S Kempson	£93		
British Blue	£458 A Bowker	£369	£338 P & J Cowgill	£252
Charolais x	£380 H Raw	£310		
Hereford x	£182 D E Richardson	£168	£155 M G Whitwell Ltd	£130
Limousin	£225 R & G & M Falshaw	£195	£185 GJ & G Billington	£156
Moly x	£150 Charnock House Farm	£150		
Simmental x	£360 J Shuttleworth & Son	£291	£268 B & J Hough & Sons	£202
Swedish Red x	£190 J Pemberton	£190		
Continental		£317		£176
Native		£113		£154
<b>STIRKS</b>	<b>Males Top price (£)</b>	<b>Ave (£)</b>	<b>Heifers Top price (£)</b>	<b>Ave (£)</b>
Baz	£570 J Bosworth	£487		
Black & White				
British Blue	£600 A R Tattersall	£505		
Char x			£455 K Purtil	£455
Hereford x	£490 R & S Tatterall	£473		
Limousin	£580 R & S Tatterall	£567		
Saler x	£245 D E Graveston	£175		
Shorthorn			£260 D E Graveston	£260
Simmental x	£505 W G Gil & Sons	£403		
White Park	£205 D E Graveston	£205		

*Auctioneer's Comments:*

176 calves and stirks forward today. 22 blue bulls sold to a high of £458 for a pen of five at 2.5 months old from Alan Bowker, Cowling. Also above the £400 mark was Harry Raw, Eastburn at £405, £418, £430 and £430. Plenty £350 plus. A pair of blue heifers topped the market at £338 a piece from P & J Cowgill but generally today heifers in the £250 - £300 bracket.

A bigger show of simmental bulls than of late from the Shuttleworth family regularly £330 - £360.

Yes calf trade, in line with the squeeze on the finished trade, has eased but anything nice made its money.

Some nice young charolais bulls at £302, £330, £355 and a top of £380 for a stronger type from Harry Raw.

Dairy bulls range widely from a handful of bobbies at £10 to £165, better sorts regularly £100 plus. In the stirk section the best sorts were well bid for. It was harder to find new homes for plainer black and white bulls.

<b>PRIME HOGGS</b>	<b>Top Sale Price (£)</b>	<b>Top Kilo Price (p/kg)</b>	<b>Average (p/kg)</b>
-32kgs	£53 J D Houghton	171 ppk J D Houghton	
32-39kgs	£105 P W Simpson	283.8 ppk P W Simpson	
40-45.5kgs	£110 P W Simpson	275ppk P W Simpson	
46.5-52.kgs+	£110 R J Lambert	220ppk R J Lambert	
52kgs +	£96 M H Bolton	171.4ppk M H Bolton	
<b>Overall SQQ Lamb Average 174 p/kg, Overall Lamb Price £71.60</b>			
Beltex	£110 R J Lambert	283.8ppk PW Simpson	262ppk
Cheviots			
Charollais	£78 GF & JC Holt	173.8ppk R&K Douglas	165.7ppk
Continental	£87 W Holden	182.9ppk W Holden	160.6ppk
Dorset			
Gritstone			
Horned	£65 JB Airey & Sons	158.5ppk JB Airey & Sons	126.1ppk
Mule	£73 BT Breaks	165.9ppk BT Breaks	164.8
Scotch			
Suffolks	£85 MH Bolton	175.5ppk J Marshall	145.4
Swaledale	£49 BT Breaks	132.4ppk BT Breaks	124.7
Texel	£96 MH Bolton	229.2ppk RJ Lambert	169.2
<b>CAST SHEEP</b>	<b>Top Sale Price (£)</b>	<b>Average</b>	
Others	£115 J D Houghton	£62	
Horned	£45 Blacklidge Bros	£36	
Tups	£30 J Pendlebury	£30	

# GISBURN MONDAY MARKET REPORT

Monday 18<sup>th</sup> January 2016

<b>Forward:</b>	<b>112</b>	<b>TOTAL PRIME SHEEP</b>	
<b>To incl</b>	<b>90</b>	<b>HOGGS</b>	
	<b>22</b>	<b>EWES</b>	
<b>NEW SEASON LAMBS</b>	<b>Top Kilo Price (p/kg)</b>	<b>Top Sale Price (£)</b>	<b>Ave (p/kg)</b>
33-39kgs	194.5 G W & J Mercer	70.00 J Demaine & J Haythornthwaite	185.5
40-45kgs	204.0 G W & J Mercer	81.50 G W & Mercer	181.5
46-52kgs	192.0 G W & J Mercer	92.00 G W & Mercer	170.0
<b>Overall lamb average £77.60 or SQQ 182.0p</b>			
<b>Breed</b>	<b>Top Kilo Price (p/kg)</b>	<b>Top Sale Price (£)</b>	<b>Ave (p/kg)</b>
<b>Chevoits</b>	168.0 Procters Farms Ltd	77.00 Procters Farms Ltd	167.0
<b>Texel</b>	204.0 G W & J Mercer	92.00 G W & M Mercer	180.5
<b>CAST SHEEP</b>	<b>Top Sale Price per head (£)</b>	<b>Ave Price per head (£)</b>	
Lowland	78.00 G W & J Mercer	57.89	
Ram	60.00 R & JM Schofield	53.50	

# www.gisburnauction.co.uk

## Saturday 16 January – Machinery Report

A typical January machinery sale saw every kind of weather on offer. On Friday we unloaded in freezing rain and on Saturday we had a bright sunny day for the sale and finished off in a snow storm.

We had an entry of over 450 lots with everything from a clay pigeon trap to a micro digger. There was a huge crowd for the start of the sale which had a farmyard clear out with some excellent galvanised feeders and hurdles. Top price in this section was for an alligator sheep handling system which sold for £1500.00 with creep feeders making up to £190.00.

Out in the yard there was a few surprises with four lots of grey Fergy parts which were destined for the scrap pile coming to over £200.00. An entry of galvanised feed barriers which were almost new sold at £340.00 each and good galvanised gates made up to £65.00 each.

In the large machinery section a well used Keenan feeder sold for £700.00 and a West 1300 Spreader also went for £700.00. Tractors were the usual mixed bag with a DB1490 4WD with DB Loader & grab from a local farm selling at £3,000.00. An International 585 4WD which was a tidy and useful tractor failed to reach the reserve but an International 276 found a new home at £780.00.

At the end of the sale an entry of items from local contractor R Hewitt were well received. A selection of JCB buckets, wheels and tyres all sold well and Ford/New Holland wheels and tyres made to £300.00 each. A Perkins Phaser 4 cyl. Engine made £460.00 followed by a Honda Power barrow at £1,030.00, and on the last row a Kubota Micro digger sold for a respectable £4,600.00.

Our next sale is on Tuesday 29<sup>th</sup> March, entries for advertising would be appreciated.

*Auctioneers: Richard Turner & Son*



## GISBURN THURSDAY MARKET REPORT

### Thursday 14<sup>th</sup> January 2016

**Forward:**    **278 Total Prime Cattle**    **40 Young Bulls;**    **69 Heifers & Steers & 169 Cull Cows**  
                   **32 Total Dairy Cattle**  
                   **147 Rearing Calves**  
                   **14 Stirks**  
                   **862 Prime Sheep**    **727 Prime Hogs & 135 Cast Sheep**

<b>PRIME CATTLE</b>	<b>No.</b>	<b>Top (p/kg)</b>	<b>Ave (p/kg)</b>
<b>HEIFERS</b>	Top sale price £1506 AA & E Critchley    Overall average price 205.3 p/kg		
	Premium    22	285ppk JM Townsend	233.4
	Prime        18	210ppk JR & F Marginson	191.1
	Others       7	179ppk F Marsden	163.2
<b>STEERS</b>	Top sale price £1430 JM Townsend    Overall average 216.6 p/kg		
	Premium    3	250ppk JM Townsend	246.0
	Prime        6	211ppk JC Mitchell	200.6
<b>BULLS</b>	Top Sale Price £1235 Newhouse Brothers    Overall average    167.8 p/kg		
	Premium    4	250ppk SD Bennett	216.8
	Prime        16	201ppk Barlow Bros	183.9
	Others       19	179ppk Newhouse Brothers	146.5
<b>CULL COWS</b>	Top Cull Continental Cow sale price £1134 Red House Farming		
	Top Cull Bull sale price £1030 Blue Hills Beef		
	Top Cull Dairy Cow £1039 Red House Farming,    Overall average 91.2 p/kg		£617.12
	Premium    17	150ppk J H Sharp	131.0
	Prime        35	120ppk J Taylor	109.5
	Other        114	101ppk DW & BL Mattinson	78.6
	Males        3	91ppk J A Crocker	87.7
	Dairy        132	134ppk J Holden & Son	84.6

*Auctioneer's comment:*

*Young bulls slightly better quality compared to previous week with trade similar. Larger entry of steers and heifers meeting a full audience again with prices very similar to the previous week. Considerably larger entry of cull cows with trade not as fast as the previous week but with over fifteen buyers present this is good evidence of the likely trade for the next week or two.*

<b>DAIRY CATTLE</b>	<b>Top price (£)</b>	<b>Average price (£)</b>
Newly Calved Heifers	£1570 G Fairburn	£1312
Newly Calved Cows	£620 R & JA Dodson	£535
In-Calf Cow	£860 JR, CJ & DD Drake	£860
Bulling Heifers	£480 PS & SP Kershaw	£429
Dairy Calves	£240 AJ & AJ Gibbons	£237

*Auctioneer's comments:*

*A big improvement in the weather as predicted last week and a much brighter trade in the dairy ring. Some good heifers from Michael Fish, Chris Hardcastle and John Asquith all about the £1500 mark with top price of £1570 going to Granville Fairburn. The bottom end of the market was much better with all heifers selling to a respectable price. In-calf cows sold to £860 and heifer calves to £240. An entry of stirks a good way off bulling topped at £480. Next week is Cogent Pedigree week and we expect 40 plus milkers and 10 calves. I have several groups of cows on offer direct from pedigree vendors, please ring if you are interested.*

<b>CALVES</b>	<b>Bulls Top price (£)</b>	<b>Ave (£)</b>	<b>Heifers Top price (£)</b>	<b>Ave (£)</b>
AAngus x	£362 J & R Baxandall	£194	£192 James Wellock	£151
Black & White	£158 W J & I France	£56	£48 W D Hayhurst & Sons	£48
British Blue	£430 J R & M I Berry, P & J Cowgill	£289	£348 AJ & AJ Gibbons	£282
Charolais	£322 P, SA & ER Brownlow	£322		
Hereford			£300 J Peel	£300
Limousin	£375 A C & N Starkie	£260	£285 S Postlethwaite	£273
Simmental x	£360 D W & B L Mattinson, J Shuttleworth & Son	£320	£330 J Shuttleworth & Son	£330
Welsh Black x			£130 J & B Rowland	£130
Continental		£287		£282
Native		£87		£153
<b>STIRKS</b>	<b>Males Top price (£)</b>	<b>Ave (£)</b>	<b>Heifers Top price (£)</b>	<b>Ave (£)</b>
Black & White	£195 R & V M Clarke	£187		
British Blue	£325 J Smith	£315	£245 J Smith	£245
WelshB x	£170 J Smith	£170		

*Auctioneer's Comments:*

*It looked like being a quiet day first thing in the calf ring, but 161 calves and stirks turned up to day. 32 Blue bulls ranged between £110 and £430 twice from JR & MI Berry and from P & J Cowgill. Both these vendors were above £400 with their second calves at £415 and £402 respectively. Blue heifers ranged between £175 and £348, the majority around £300 in round figures. A shortage of Simmentals today, but not demand – bulls at £350, £350 £360 and £360 from DW & BL Mattinson and J Shuttleworth & Son. Although the black and whites don't look as dear on paper there was a shortage of mid range types today, but the better sorts £90-£158 all sale. Next Thursday is actually Stirk week although a handful did turn up today. Please would vendors let the office know 01200 441351 by Tuesday lunch time of approximate entries, then buyers can be informed of likely numbers forward.*



<b>PRIME HOGGS</b>	<b>Top Sale Price (£)</b>	<b>Top Kilo Price (p/kg)</b>	<b>Average (p/kg)</b>
-32kgs	£50 S Tidswell	172.4 S Tidswell	147.8
32-39kgs	£90 John Mellin	236.8 John Mellin	175.6
40-45.5kgs	£101 Proctors Farms Ltd	252.5 Proctors Farms Ltd	172.3
46.5-52.kgs+	£104 Proctors Farms Ltd	221.7 Proctors Farms Ltd	1.604
52kgs +	£95 T Laxton	163.8 T Laxton	147.0
<b>Overall SQQ Lamb Average 1.731 p/kg, Overall Lamb Price £70.83</b>			
Beltex	£101 Proctors Farms Ltd	252.5 Proctors Farms Ltd	152.8
Cheviots	£85 T Laxton	191.3 Proctors Farms Ltd	167.9
Charollais	£95 T Laxton	173.36 K Purtil	167.7
Continental	£75 M D Cornthwaite	191.2 J Barrett	167.8
Dorset	£65 M D Cornthwaite	166.7 M D Cornthwaite	166.7
Gritstone	£71 R & S Tattersall	164.0 R & S Tattersall	164.0
Horned	£60 J L Allison	133.3 J L Allison	126.4
Mule	£75 R Robinson & Son	173.3 T Robinson & Son	156.2
Scotch	£68 AR & CA Parkinson	165.9 AR & CA Parkinson	165.0
Suffolks	£80 Ian Denby	157.6 WJ Hargreaves	154.7
Swaledale	£62 D & S Hollings	159.0 D & S Hollins	145.9
Texel	£104 Proctors Farms Ltd	236.8 John Mellin	172.4
<b>CAST SHEEP</b>	<b>Top Sale Price (£)</b>	<b>Average</b>	
Others	£90 F & H Waddington, N J Johnson	£61	
Horned	£60 F & H Waddington	£33	
Tups	£95 F & H Waddington	£85	
<i>Auctioneer's comments:</i>			
<p><i>A brilliant lift in trade today where many more lambs could have been sold to vendors advantage. A full compliment of buyers present today with 9 active buyers from butchers to wholesalers and commercial buyers. A good entry of lambs of all qualities forward for sale Proctors farms sold 3 pens of lambs above the £100 per head mark or topping at 252p/Kg and others selling over the £100 mark included R J Lambert, Wigglesworth. In general a good export type lamb would be £75-£80, mule lambs £20-£25 over their weight and horned lambs £20 over their weight. Ewes saw a very similar trade on the week with a few less numbers about. Bigger end Texel ewes would be around the £90 mark, Mule ewes at £60 - £65, horned ewes good to sell topping at £60 per head for Lonks from H Waddington, Bolton by Bowland. For more information please contact Jonathan on 07834772276.</i></p>			



# GISBURN MONDAY MARKET REPORT

Monday 11<sup>th</sup> January 2016

Forward: 468 TOTAL PRIME SHEEP  
To incl 416 HOGGS  
52 EWES

NEW SEASON LAMBS	Top Kilo Price (p/kg)	Top Sale Price (£)	Ave (p/kg)
Up -32kgs	164.5 R Miller	52.50 R Miller	162.5
33-39kgs	172.0 G Sunter	66.00 G & M Harrison	165.0
40-45kgs	181.5 G W & J Mercer	72.50 G W & Mercer	163.5
46-52kgs	169.0 J Turner	80.00 J Turner	153.8
53kgs+	135.0 F E Bennett	74.00 F E Bennett	135.0

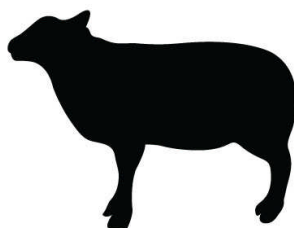
Overall lamb average £65.00 or SQQ 164.0p

Breed	Top Kilo Price (p/kg)	Top Sale Price (£)	Ave (p/kg)
Badger face	150.0 J H Whalley	55.50 J H Whalley	150.0
BFL	140.5 R Mawson	57.50 R Mawson	140.5
Charollais	168.0 P Coates (Farmers) Ltd	70.50 P Coates(Farmers) Ltd	168.0
Chevoits	171.0 G W & J Mercer	72.50 G W & J Mercer	167.0
Mule	164.5 J Turner	72.00 H Carr & Son	148.5
Suffolk	157.5 James Tatham	70.50 T N M Stow	154.5
Texel	181.5 G W & J Mercer	80.00 J Turner	163.3

CAST SHEEP	Top Sale Price per head (£)	Ave Price per head (£)
Lowland	96.00 F E Bennett	63.00
Ram	76.00 J H Whalley	57.69

Auctioneer's comment:

Numbers were as expected for the time of year (and weather) with price very similar to other centres this morning. Although not a lot of weight about any good 42Kg lambs would be well over the £70 mark any many more could have been sold to vendors' advantage. Heavy lambs perhaps not seeing the premium as last week but still £75 - £80. Ewes were the trade of the day with many Mule ewes at £65 per head topping at £74 per head with some nice Blue Texel ewes from J H Whalley at £96 per head. For any information or advice please call Jonathan on 07834772276



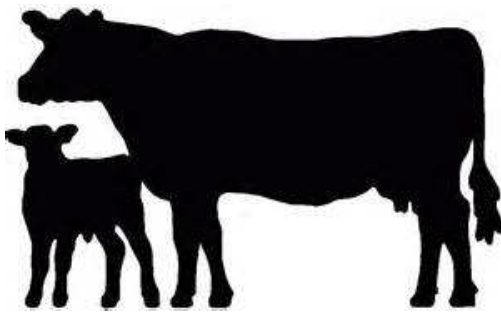
[www.gisburnauction.co.uk](http://www.gisburnauction.co.uk)

## GISBURN SATURDAY MARKET REPORT

Saturday 9<sup>th</sup> January 2016

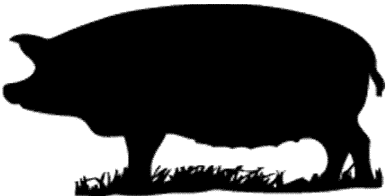
<b>Forward:</b>	<b>195</b>	<b>TOTAL BREEDING/STORE CATTLE</b>
	<b>12</b>	<b>Cows and Calves</b>
	<b>13</b>	<b>In Calf Cattle</b>
	<b>1</b>	<b>Breeding Bulls</b>
	<b>45</b>	<b>Bulls</b>
	<b>124</b>	<b>Steers/Heifers</b>
	<b>174</b>	<b>PIGS</b>
	<b>368</b>	<b>238 BREEDING AND STORE SHEEP and 130 STORE LAMBS</b>

### BREEDING /STORE CATTLE

COWS WITH BULL CALVES		£Avg	COWS WITH HEIFER CALVES		£Avg			
Hereford	£1000 E Peace & Son	£990	£1140 E & M Townley & Son	£1140				
Limousin	£1340 R & C Greenwood	£1240						
IN-CALF/FEEDING CATTLE								
AA	£760 R Caton	£760						
BBlue	£880 R Caton	£830						
BAq	£1060 Aimee Beresford	£1060						
Charolais	£980 Aimee Beresford	£980						
Hereford	£580 K & E Thorpe	£580						
Limousin	£1140 R G Barron Livestock	£810						
Simmental	£1060 R G Barron Livestock	£910						
BREEDING BULL								
Charolais	£1220 D Pawson	£1220						
STORES Bulls Top price (£)			Ave (£)					
AA	£750 W A Nutter	£551						
Black & White	£510 N Parker	£430						
BRB	£580 R & A J Haworth	£580						
Charolais	£580 J Ashworth	£538						
Lim	£960 J Feather	£597						
Simmental	£695 R & A J Haworth	£647						
Shorthorn	£680 R & A J Haworth	£567						
STORES Steers Top price (£)			Ave (£)		Heifers Top price (£)		Ave (£)	
AAX	£885 Martin Lee	£757	£730 J Sellers	£585				
BAq	£785 M A Ibbotson	£728	£625 P & S Ireland	£625				
Black & White	£700 RW Cornthwaite	£537	£815 J & S Hartley	£580				
BRB	£1020 E & M A Burrow & Son	£912	£1090 T P & E Clayton	£734				
Charolais	£945 C W Sutcliffe	£691	£820 M Dewhurst	£744				
Hereford			£875 R W Cornthwaite	£608				
Lim	£1175 WS Lynch	£833	£1155 TP & E Clayton	£760				
Saler			£590 NM Breaks	£590				
Shorthorn	£755 R & CA Sanderson	£755						
Simmental			£430 NM Breaks	£430				
South Devon			£815 C W Sutcliffe	£815				

*Auctioneer's comment:*

*The first new year trade proved encouraging with breed, size and quality all reflecting confidence for the coming months. Please pre-enter cattle whenever possible so buyers can be advised. We have a wide and selective audience capable of satisfying all reasonable expectation.*

PIGS		Avg	
Weaners	£28 David Atkinson	£17.44	
Store	£54 P Leadbetter	£43.60	
Prime	£84 Phillip Brown	£57.75	
Family	£54 M Fawcett	£48.67	
Gilts	£65 L Sutcliffe	£46	
Sows	£44 Paul Procter	£28.18	
Boars	£80 John Ludbrook	£34.50	
<i>Auctioneer's comment:</i>			
A comfortable turnout for the new year. Plenty of pigs of all sorts to satisfy any demand. Trade remains consistent with recent trends and comparable with other outlets. Next sale in a fortnight on Saturday 23 <sup>rd</sup> January. Sale starts 10.30 am. Please advise entries to the office well in advance for advertising. Telephone 01200 445 376			
Happy New Year and Thankyou from Annis Schofield			

BREEDING & STORE SHEEP		Top(£)	Av(£)
<b>IN-LAMB EWES</b>			
Charollais	£135 J H Gornall	£135	
Gritstone	£88 J H Gornall	£65.30	
Mule	£85 J H Gornall	£70	
Suffolk	£105 J H Gornall	£105	
Swaledale	£80 J H Gornall	£80	
Texel	£100 C D Slinger	£81.80	
<b>IN-LAMB SHEARLINGS</b>			
Mule	£92 G Hitchen	£87.50	
Texel	£94 R Ainsworth	£87.40	
<b>EWES WITH TWIN LAMBS</b>			
Dorset	£162 M Peacock	£162	
<b>EWES WITH SINGLE LAMBS</b>			
Dorset	£130 M Peacock	£130	
<b>STORE LAMBS</b>			
Beltex	£66 L M Braithwaite	£66	
Charollais	£64 D H Walton	£64	
Kerry	£57 D H Walton	£57	
Masham	£55 R Howarth	£55	
Texel	£74 C J & E T Harrison	£49	
Overall Average		£49	

*Auctioneer's comment:*

The first sale of the new year saw a couple of spare lambs to start which sold for £15 a piece. Ewes with lambs at foot were next, £162 for a Dorset x ewe with twins topped this section, others with twins at £155. Full/broken mouth ewes and singles all sold £125 - £130.

In lamb Mules topped at £92. It is very important that vendors get their sheep scanned-up prior to sale. If not pre-scanned there will be a scanning service 9.30 to 10.30 am on a Saturday sale until further notice. It makes a huge difference to the eventual sale price.

In lamb Texels scanned with twins due mid March topped at £100. Two Charollais, one scanned with a single and one with a triplet to the Texel made the top price of the day at £135.

Better end of store hogs were regularly mid fifties to sixties, to a top of £74 for the penultimate pen of the day, some smart Texel Charollais.

Next sale is 23<sup>rd</sup> January. We already have several batches of in-lamb sheep entered, both commercial and MV Accredited Texels. We encourage all vendors to pre-enter their entries to 01200 441351 or 01200 445376 on sale days, by lunch time on Tuesday 19<sup>th</sup> January for inclusion in the catalogue.

Anyone looking for spare lambs please keep an eye on our register on the website. In the meantime please ring Tom Critchley on 0797 605 5742 who has some available.



## GISBURN THURSDAY MARKET REPORT

### Thursday 7<sup>th</sup> January 2016

**Forward:**    **212 Total Prime Cattle**    **60 Young Bulls;**    **36 Heifers & Steers**    **& 116 Cull Cows**  
                   **55 Total Dairy Cattle**  
                   **316 Rearing Calves**  
                   **793 Prime Sheep**    **622 Prime Hoggs &**    **171 Cast Sheep**

<b>PRIME CATTLE</b>	<b>No.</b>	<b>Top (p/kg)</b>	<b>Ave (p/kg)</b>
<b>HEIFERS</b>	Top sale price £ 1467.84 RW Longton		Overall average price 215.6p/kg
	Premium 17	276 JM Townsend	241.5
	Prime 5	205 S Greenwood	192
	Others 4	171 The Moss	146.8
<b>STEERS</b>	Top sale price £1352.40 RW Longton		Overall average 198.3p/kg
	Premium 4	245 RW Longton	229
	Prime 1	209 B Goad	209
	Others 5	175 J Neary	172.1
<b>BULLS</b>	Top Sale Price £1432.44 R Turner		Overall average 170.2p/kg
	Premium 11	217 R Turner	205.6
	Prime 20	197 H & F Eccles & Son	185.4
	Others 28	174 Frankland Farms	144.3
<b>CULL COWS</b>	Top Cull Continental Cow sale price £1296 JH & SM Mason, Keasden		
	Top Cull Bull sale price £1385.80 JA & JM Wade & Son		
	Top Cull Dairy Cow £1033.20 H&M Dugdale & Son Overall average 96.3 p/kg £641.79		
	Premium 31	200ppk JH & SM Mason, Keasden	122.3
	Prime 25	109ppk M&WM Berry, N&ML Pilkington, J&W Bracewell	102.5
	Other 55	97ppk Ian Wellock, AP Townsend	74.9
	Males 5	130ppk JA & JM Wade & Son	104
	Dairy 88	130ppk J & S Hartley	89.8

*Auctioneer's comment:*

*Heifers and steers smaller entry than anticipated with premium butcher grades meeting good competition from a regular audience. Supermarket grades very much in line with deadweight prices. Young bulls proved a good entry and met a firm trade despite a majority on the lean side. Cull cows surprisingly a good trade compared to December's trade but better fed cattle are now coming forward.*

<b>DAIRY CATTLE</b>	<b>Top price (£)</b>	<b>Average price (£)</b>
Pedigree New Calved Heifers	£1800 GD Donkin, Copster Green	£1405
Newly Calved Heifers	£1480 T&C Robinson, Tosside	£1103
Newly Calved Cows	£1220 M&WM Berry, Horton in Craven	£1050
Dairy Calves	£180 G&M Dakin & Sons	£174

*Auctioneer's comments:*

*As predicted, the dairy trade took a downturn as we started the new year. There was a superb show of heifers on offer and a full ringside of what turned out to be mostly spectators.*

*James Kayley chose Lee Donkin's heifer for first prize in the Pedigree class which sold to Dave Coulthurst at £1800. There were plenty of good heifers either side of £1500 and for the first time for a long time some heifers failed to sell.*

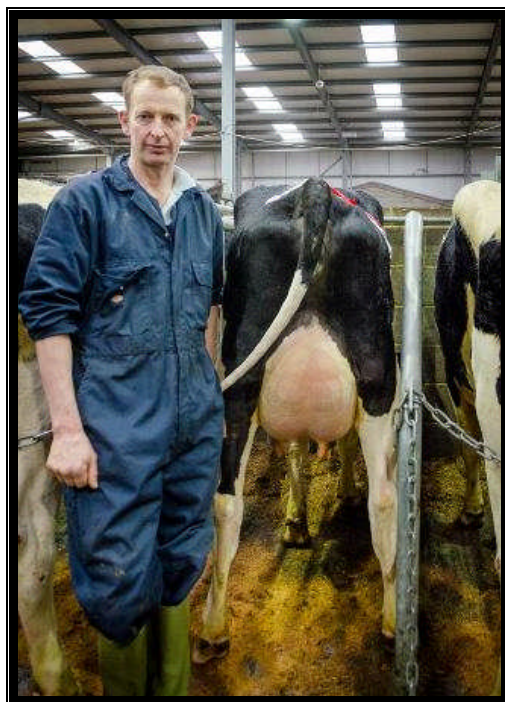
*A combination of poor milk price, late farm payments and the weather are all testing farmers' resolve – my bet is the weather will improve first.*

*Fred*

# DUGDALE DAIRY CATTLE SHOW

7<sup>th</sup> January 2016

## CHAMPION



Lee Donkin of G D, R M & L Donkin, Park Gate Farm, Copster Green  
(picture courtesy of Dugdale Nutrition)

Champion in show today went to the Pedigree newly calved heifer by Mattson, giving 34 kilos at three weeks calved. The Copdon Marcia herd of 100 strong are all homebred, having never bought an animal on for the last ten years, rearing 60 heifers each year. Lee recalls coming to Gisburn Auction as a youngster and has been coming here for the last 35 years. Well done to the Donkin family Lee, Gerry (dad) and Rose (mum) and the many generations before.

## DUGDALE DAIRY CATTLE SHOW RESULTS 7.1.16



	<u>Vendor</u>	£	<u>Purchaser</u>
<b>CHAMPION</b>	GD Donkin	£1800	Dave Coulthurst
<b>Class1 Best Newly Calved Heifer</b>			
1 <sup>st</sup>	T&C Robinson	£1480	T&M Green
2 <sup>nd</sup>	GC&E Asquith	£1240	FA&TCR Wrathall
3 <sup>rd</sup>	G&M Dakin & Sons	£1540	Claytons Partnership
<b>Class2 Best Newly Calved Pedigree Heifer</b>			
1 <sup>st</sup>	GD Donkin	£1800	Dave Coulthurst
2 <sup>nd</sup>	P Knowles	£1530	Hill & David
3 <sup>rd</sup>	P Knowles	£1500	AP Townsend
<b>Class 3 Best Newly Calved Cow</b>			
1 <sup>st</sup>	GT&M Dakin & Sons	£900	JG Williams
2 <sup>nd</sup>	H&M Dugdale	£880	T&D Goulding & Sons
3 <sup>rd</sup>	S Forshaw & Sons	£910	DW&BL Mattinson

CALVES	Bulls Top price (£)	Ave (£)	Heifers Top price (£)	Ave (£)
AA	420 JS & KA Whitaker	206	310 DW Shuttleworth	194
Black & White	250 K & S Kempson	71		
British Blue	448 A Bowker	306	360 DW Shuttleworth	285
Charolais	425 G & M Dakin & Sons	336	350 G & M Dakin & Sons	297
Hereford	235 MG Whitwell Ltd	157	245 MG Whitwell Ltd	192
Limousin	385 WT Eastham & Son	223	318 WT Eastham & Son	204
Montbeliard	150 A&T Smith	148		
Simmental	365 SR Shuttleworth	303	332 SR Shuttleworth	281
Shorthorn	268 LM Harrison & Son	219	155 JE & SM Seedall	155
Welsh Black x	120 Joylan Farms	120	120 Joylan Farms	104
Continental		292		267
Native		192		177

*Auctioneer's Comments:*

314 calves today due to Christmas and New Year and overall right through a better trade than most expected with the increased entry forward.

52 Blue Bulls topped at £448 for a quartet of strong calves from Alan Bowker. Next at £425 was a beautiful 7 week old calf from JR & MI Berry. The majority in the £350-£400 bracket. 42 Blue heifers topped at £360 from David Shuttleworth, Gargrave, but generally £300.

More Limousins about than some weeks but varied quality – selling between £70 and £385 from WT Eastham & Son for bulls. The same vendor sold the top priced heifer at £318, but mostly in the £190-£260 range.

Plenty of demand for Charolais – bulls at £425 from Peter Dakin and £370, £365 and £360 from the Hartley family. Heifers around £300.

101 dairy bulls ranged widely between £5-£20 for bobbys to £250 for a packet of strong black and whites from Karl Kempson. Majority of the better blacker types in the £80-£130 bracket and an overall average of £71 for all quality was achieved.

We expect another larger than usual entry of calves (for the time of year) next week and indeed probably the following week until the Christmas back log is cleared.

PRIME HOGGS	Top Sale Price (£)	Top Kilo Price (p/kg)	Average (p/kg)
-32kgs	£57 AA&E Critchley & Son	178.1 AA&E Critchley & Son	147.9
32-39kgs	£80.50 K Purtil	206.4 K Purtil	175.2
40-45.5kgs	£94 Proctors Farms Ltd	213.6 Proctors Farms Ltd	174.6
46.5-52.kgs+	£97 Proctors Farms Ltd	198.0 Proctors Farms Ltd	169.4
52kgs +	£95.50 F&H Waddington	171.8 M&WM Berry	160.9
<b>Overall SQQ Lamb Average 173.6p/kg, Overall Lamb Price £70.43</b>			
Beltex	£97 Proctors Farms Ltd	213.6 Proctors Farms Ltd	209.2
Cheviots	£75 JD & JA Holgate	178.6 JD & JA Holgate	174.7
Charollais	£86 E&J Haythornthwaite	184.7 J English & L Kelsall	172.3
Horned	£71 JD&JA Holgate	175.7 JD&JA Holgate	158.0
Mule	£65 H Carr & Son	144.4 H Carr & Son	142.7
Suffolks	£73.50 R Caton	183.8 R Caton	167.3
Texel	£95.50 F&H Waddington	206.4 K Purtil	174.4
Zwartble	£88 J&M Blakey	160.0 J&M Blakey	160.0
CAST SHEEP	Top Sale Price (£)	Average	
Others	£85 Matt Carefoot , Edward J Holgate	£54.37	
Horned	£58 A Wood	£28.25	
Tups	£80 Alan Taylor & Sons	£44	

*Auctioneer's comments:*

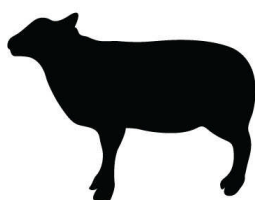
Prime sheep met a well behaved audience with surprising results reflecting a shortage of numbers forward throughout previous day markets this week. Beltex and Texel hoggs topped the 200 pence level with 35kg-45kg weight ranges topping 175pence on a regular basis. Cull sheep a noticeably improved trade but not quite comparable to the first in the prime hogg values.

# GISBURN MONDAY MARKET REPORT

Monday 4<sup>th</sup> January 2016

Forward: 493 TOTAL PRIME SHEEP  
 To incl 466 HOGGS  
 27 EWES

NEW SEASON LAMBS	Top Kilo Price (p/kg)	Top Sale Price (£)	Ave (p/kg)
33-39kgs	167.0 J Peel	65.00 J Peel	150.0
40-45kgs	180.0 D Moorhouse	73.00 H Carr & Son	156.5
46-52kgs	164.5 MA & JR Sharpe	85.50 MA & JR Sharpe	150.0
53kgs+	139.0 Paul Morley	75.00 Paul Morley	139.0
<b>Overall lamb average £58.22 or SQQ 151.0.p</b>			
Breed	Top Kilo Price (p/kg)	Top Sale Price (£)	Ave (p/kg)
<b>Badger face</b>	152.5 J Peel	64.00 J Peel	152.5
<b>Beltex</b>	180.0 D Moorhouse & Son	85.50 MA & JR Sharpe	156.5
<b>Charollais</b>	162.0 M R & L M Bamford	61.50 M R & L M Bamford	162.0
<b>Gritstone</b>	162.5 K & S Kempson	65.00 K & S Kempson	162.5
<b>Horned</b>	152.5 J Taylor	70.00 K & S Kempson	130.0
<b>Mule</b>	150.0 G & M Harrison & Son	67.00 H Carr & Son	147.0
<b>Suffolk</b>	159.0 K & S Kempson	70.00 L Airey	154.5
<b>Swaledale</b>	147.8 H Carr & Son	62.00 H Carr & Son	138.3
<b>Texel</b>	174.0 H Carr & Son	73.00 L Airey	154.5
CAST SHEEP	Top Sale Price per head (£)	Ave Price per head (£)	
Lowland	80.00 MA & JR Sharpe	65.68	
Horned	30.00 R & JM Schofield	25.00	
Ram	80.00 MA & JR Sharpe	55.00	



END OF MONTHLY REPORT  
 FOR JANUARY 2016

**[www.gisburnauction.co.uk](http://www.gisburnauction.co.uk)**